



# Mulbarton Primary School

*'Helping each other to learn and grow'*

Telephone - 01508 570326

Email - [office@mulbartonprimary.norfolk.sch.uk](mailto:office@mulbartonprimary.norfolk.sch.uk)

## NEWSLETTER

26.04.2024

### Child safety

Thank you for your support in keeping children off the play equipment when arriving and leaving school.

Reminder: the road outside the main school entrance will be closed on Monday 29<sup>th</sup> April due to works being carried out by Openreach. We do not envisage an issue accessing the school or the Doctors surgery, but it could cause congestion during busy times such as pick up and drop off.

Once again, can we please ask that you drive carefully near our school entrances and avoid parking on the zig-zag lines. We have been made aware of a 'near miss' this morning - your children's safety is paramount.

### Kitchen Team

This week we bid farewell to our kitchen staff after many years of working in our school kitchen. We would like to thank the team for all their hard work and wish them well in the future.

### School photos

On Thursday 2<sup>nd</sup> May, we have a photographer visiting school to take photos for our new website which will launch soon. Can we please ask that all children wear their full school uniform. If it is a PE day for your child, or they have a club after school, please ensure they are dressed in the correct PE kit, as per our uniform policy:

**Blue jumper or cardigan (with or without the logo)**

**Grey or black trousers, knee length shorts, skirt or skort**

**White or blue polo shirt (with or without logo)**

**Blue gingham summer dress**

**Plain black shoes or trainers (must be plain with no writing or colour on)**

**PE kit** – house/plain navy t-shirt, black or navy jogging bottoms/leggings or shorts, school sweatshirt/cardigan and trainers.



## Online safety survey

Thank you to those of you who responded to our parents' online safety survey. We are aware that the link did not work for everybody, so if you have not yet been able to, we would be very grateful if you could spare a minute or two to look through it. The information will be invaluable to help us help you to keep your children safe.

Please click this new link:

<https://forms.office.com/Pages/ResponsePage.aspx?id=Fx7g3hdfPk6z9hIVBwlc9K5qyg2AUEpHi-iEXOSrOfpUOUw1OUxLMDQ1NjVTU0JJUEhaOFZDWUVVCO4u>

## Diary dates

<b>May-24</b>	
Monday 1st	Reception Multi Skills Festival
Tuesday 2nd	School photos for our website
Tuesday 7th	Class Photos
Tuesday 7th	Preloved uniform sale (3.00 - 3.30pm)
Monday 6th	Bank Holiday
Thursday 16th	Fun at the Fair themed lunch
Friday 17th	Year 3 trip to Whitlingham Country Park
Thursday 23rd	Preloved uniform sale (3.00 - 3.30pm)
Friday 24th	Last day of term
<b>Jun-24</b>	
Friday 7th	Summer Fayre (5pm - 7pm)
Monday 17th	Sports Day (9.30am - 12.00pm)
Monday 17 <sup>th</sup> – Friday 21st	Creative Week
Tuesday 18th	Welcome meeting for new reception parents
Thursday 20th	Year 5 trip to Norwich Cathedral
<b>Jul-24</b>	
Monday 1st	Preloved uniform sale (3.00 - 3.30pm)
Wednesday 3rd	Year 2 Dance Showcase
Monday 8th	Year 4 trip to West Stow
Tuesday 9th	Year 6 trip to Crucial Crew
Thursday 11th	Rocksteady concert (2.30 - 3.00pm LSH)
Friday 19th	Last day of term

## May Half Term Camp

Next Thing Education will be running a May Half Term Camp (28<sup>th</sup> May – 31<sup>st</sup>). Their mission is simple: **to inspire, engage, and empower** the next generation of innovators. They aim to spark curiosity and foster creativity using cutting-edge technology. Here's a glimpse of what awaits:

- 🤖 **LEGO ENGINEERING** – Create and build frames with axles and crankshafts that allow you to explore and learn about different functions like spinning or turning back and forth.
- 🚀 **VIRTUAL REALITY** - With the magic of VR, you can explore breath-taking virtual worlds, design your own adventures, and unleash your imagination like never before.
- 🎮 **3D CREATIONS** - Unlock your inner Tech Artist and create mesmerising three-dimensional creations, letting your imagination soar!
- 🏆 **LASER TAG** - Step into the action-packed world of laser tag! Engage in thrilling battles and team up with friends in the ultimate test of skill and strategy.
- ⚡ **CIRCUITRY AND ELECTRONICS**– Learn about electronics with circuit cubes and test your building skills with endless projects possibilities!

Different activities each day, to find your camp specific activities please check out our website!

<https://www.nextthing.education/product/mulbarton-primary-school-may-camp/>

# MAY HALF TERM 2024

28TH - 31ST MAY

## ACTIVITIES THEY'LL LOVE!

- LEGO ANIMATION
- MINECRAFT CODING
- 3D PENS
- CIRCUITRY
- SMART ROBOTICS
- LAZER TAG
- VR
- ENGINEERING EXPERIMENTS

### HERE THIS MAY HALF-TERM!

# TECH CAMP

**Robotics & Coding**

**Circuitry & Electronics**

**Tech Fun**

**What to bring to camp?**

- Packed Lunch and Snacks (if needed)
- Water Bottle
- Medication (if required)
- Weather Appropriate Clothing

**We are in your area!**

We have more than 30 camps running this May. Find your local camp on our website: [www.nextthing.education](http://www.nextthing.education)

★★★★★

**Kids love NextThing!**

"My child had a fabulous time, and this is the first type of STEM holiday club I've seen in our area. I'd definitely recommend and book again!"

Parent - St John's College School

**£5 OFF**

WITH CODE: MAYS

**FOR BOYS & GIRLS AGES 5-11, 9 AM - 4 PM DAILY**

FIND YOUR NEAREST CAMP ON OUR WEBSITE

[www.nextthing.education](http://www.nextthing.education)

**W: www.nextthing.education**  
**E: info@nextthing.education T: 01442 873150**



WHITSUN  
HALF-TERM

# PREMIER HOLIDAY CAMPS



INSPIRING  
ACTIVITY



SCAN HERE FOR  
MORE INFORMATION

or visit [premier-education.com/holiday-camps](https://premier-education.com/holiday-camps)



Based on over 20,000 reviews

# YOUR NEAREST MULTI-ACTIVITY CAMP

**Venue:** Mulbarton Primary School

**Dates:** 28.05.24-31.05.24

**Times:** 09.00-15.30,09.00-13.00 (Half Day)

**Price:** £21.24

**Ages:** 4-12

**Additional info:** Age 4 half day option

Our 5\* Holiday Camps are the perfect place to keep your kids entertained over the Whitsun half-term.

Children can meet new friends, have lots of fun, and create wonderful memories!

Every day is different, with a mix of fun activities that children may not have tried before - from dodgeball to cricket, basketball to archery.

**Book now** for a half-term full of fun!

## CAMPS ARE BETTER WITH FRIENDS!



**TREAT YOUR FRIENDS TO 20% OFF...AND GET 20% OFF TOO!**

\*Ts&Cs apply. Refer a Friend discount on new bookings only.

### PLEASE BRING

A packed lunch  
Plenty of water  
Suitable clothing  
Loads of energy!



Based on over 20,000 reviews





## High Lodge Adventure Golf

18 holes - £5.50pp  
Great fun for all ages!

**10% off**

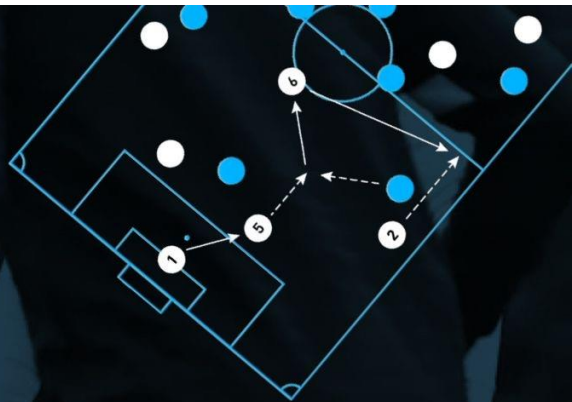
Just turn up and bring this flyer  
with you to receive the discount

Open weekends & school holidays

[www.highlodgeadventuregolf.co.uk](http://www.highlodgeadventuregolf.co.uk)



CAN  
IMPROTECH  
SOCCER  
ACADEMY



CURRENT YEAR 6

# ACADEMY TRIALS

## DATES:

WED 1st MAY - MIXED  
WED 8th MAY - GIRLS ONLY  
WED 15th MAY - MIXED  
WED 22nd MAY - MIXED

ALL SESSIONS 5 - 6 PM

## VENUE:

CITY ACADEMY NORWICH  
299 BLUEBELL ROAD  
NORWICH. NF4 7LP

SESSIONS ARE INDOOR THEREFORE APPROPRIATE FOOTWEAR  
REQUIRED.

## RSVP + INFO

[DAN@IMPROTECHSOCCER.COM](mailto:DAN@IMPROTECHSOCCER.COM)